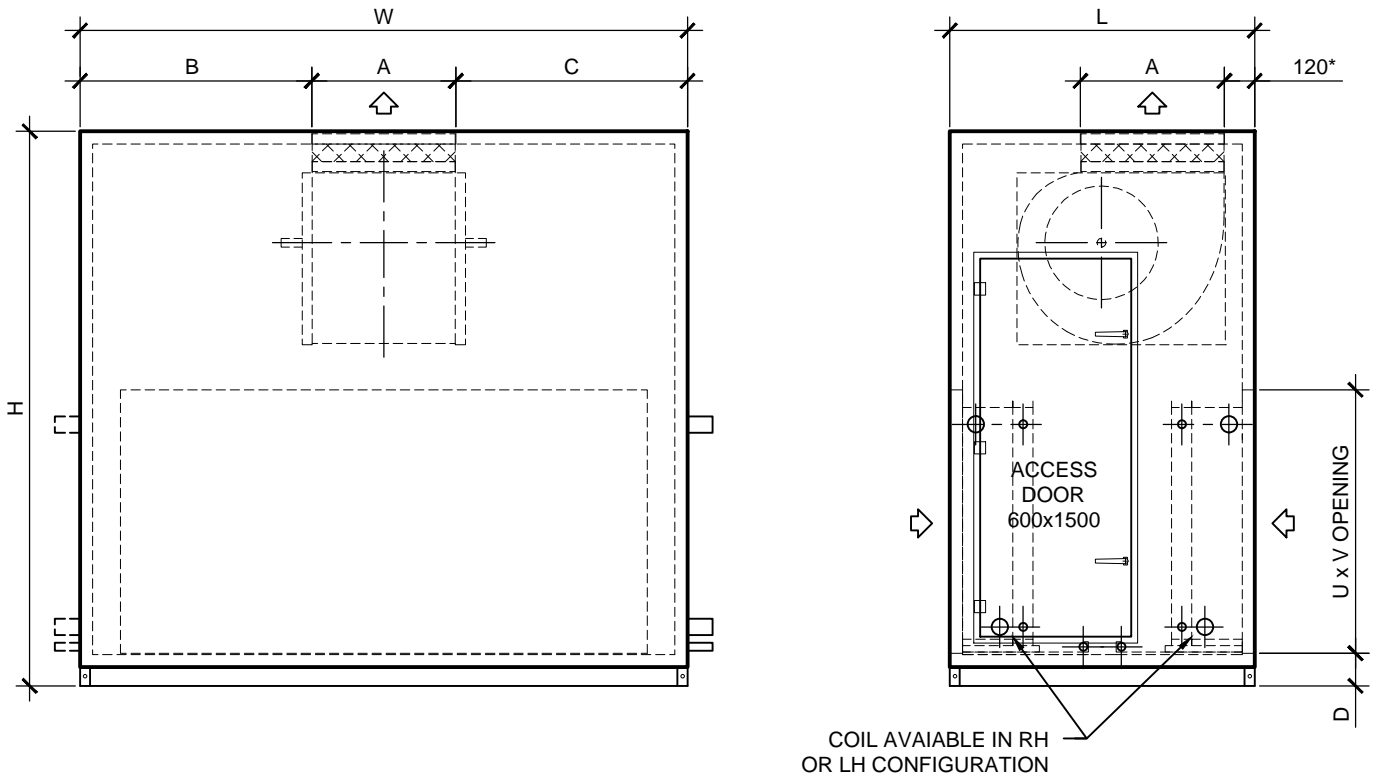


# SA DOUBLE SKIN AIRHANDLING UNITS VERTICAL UNITS - VERTICAL DISCHARGE



Model	L	W	H	U	V	A	B	C	D	E	FAN
<b>SA-048V</b>	740	1210	1575	380	880	232	298	680	75	130	180
<b>SA-096V</b>	700	1210	1575	635	880	326	228	656	75	130	250
<b>SA-140V</b>	1210	1210	1710	790	880	408	401	401	75	130	315
<b>SA-210V</b>	1210	1810	1575	740	1490	456	677	677	75	130	355
<b>SA-290V</b>	1210	1810	2200	1045	1490	572	619	619	75	130	450
<b>SA-410V</b>	1210	2410	2200	1045	2090	642	884	884	75	130	500
<b>SA-480V</b>	1510	2410	2535	1180	2090	718	846	846	100	155	560
<b>SA-660V</b>	1810	3010	2710	1180	2690	804	1103	1103	100	155	630
<b>SA-820V</b>	1810	3610	3000	1345	3290	902	1354	1354	100	155	710
<b>SA-1050V</b>	1810	3610	3410	1600	3290	1010	1300	1300	100	155	800

**Notes:**

The fan outlet dimensions are a guide only. The correct fan will be selected to meet the specified requirement which may change dimensions.

\* For vertical discharge units, this dimension varies from 120mm to 200mm depending on fan and casing size.

Access doors are 600mm wide and 1500mm high, casing size permitting.

Materials and specifications may change without notice.



**SKILLED AIR**  
Australia

PH: (08)9314 3844

FAX: (08)9314 3855