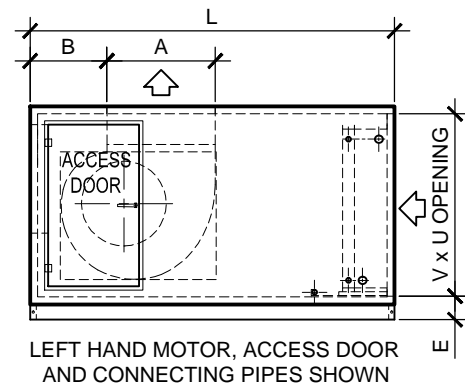
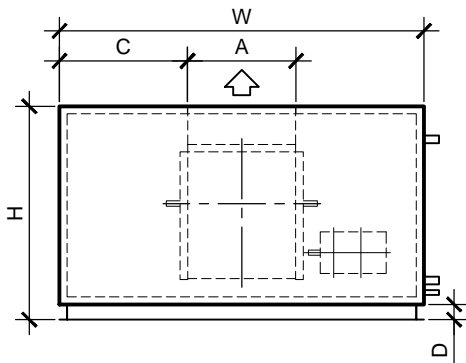


# SA DOUBLE SKIN AIRHANDLING UNITS TOP DISCHARGE - T4 SCROLL TO BACK



MODEL	L	W	H	U	V	A	B	C	D	E	FAN
SA-048H	1200	1200	775	880	600	260	247	470	75	130	200
SA-096 H	1200	1200	825	880	650	326	247	437	75	130	250
SA-140H	1200	1200	1025	880	850	408	246	396	75	130	315
SA-210H	1500	1800	1075	1480	900	510	248	645	75	130	400
SA-290H	1800	1800	1225	1480	1050	572	248	614	75	130	450
SA-410H	1800	2400	1225	2080	1050	642	248	879	75	130	500
SA-480H	2400	2400	1400	2080	1200	718	345	841	100	155	560
SA-660H	2400	3000	1700	2680	1500	902	345	1049	100	155	710
SA-820H	2400	3600	1800	3280	1600	1010	345	1295	100	155	800
SA-1050H	2400	3600	2000	3280	1800	1134	370	1233	100	155	900
SA-1290H	3000	3600	2275	3280	2050	1270	439	1165	125	180	1000
SA-1520H	3000	3600	2575	3280	2350	1270	439	1165	125	180	1000
SA-1850H	3600	4200	2575	3880	2350	1422	464	1389	125	180	1120
SA-2080H	3600	4200	2925	3880	2700	1528	464	1336	125	180	1250

## Notes:

The fan outlet dimensions are for the biggest size of fan that a model can accommodate. In the majority of cases a smaller fan meets the specified requirements, in which case the dimensions may change.

Access doors are 600mm wide (or 500mm where there are size restraints) and either 1500mm high or 1200mm high, otherwise as close to the unit height as possible for AHUs lower than 1200mm high.

Materials and specifications may change without notice.



PH: (08)9314 3844

FAX: (08)9314 3855